

High Performance Chemistry™



SDC Corporate Presentation

January 2018





Table of Contents

- **Company Overview**
 - History & Technology Profile
 - Global Foot Print
 - Technology, Quality & Safety
 - Trusted Advisor Program
 - Business Initiatives, Values, Conduct & Trends
- **Markets Served**
 - Industrial, Electronics, Transportation
 - Medical/Safety, Military/Security
 - Ophthalmic, Sunglass & Sports Eyewear
- **Products Overview**
 - SDC Coating Innovation
 - Features and Benefits
 - Product, Substrate & Coating Options
 - Index-Matched, Multi-Purpose, Primerless, Tintable, UV-Cure & Weatherable Coatings
- **Technical**
 - Global Service & Support
- **Summary**
 - Value Proposition, Brand Elevation
 - Innovative Products, Support and Partnership

Company

Vision, Mission, Values



32 YEARS OF PRODUCT INNOVATION




32 Years of Innovation

- 1986 Joint Venture of SDC (Swedlow Coatings, Inc. and Dow Corning Enterprises, Inc.) for Automotive & Aerospace Hard Coatings
- 1988 Partnered with Nippon Sheet Glass in Japan for Asia expansion
- 1989 Opened European Site
- 1996 SDC developed and patented a wide range of abrasion resistant products
- 2006 Established China Office to expand presence in Asia
- 2008 Expanded & Relocated Headquarters to Irvine, CA
- 2008 Acquired by Mitsui Chemicals Inc. in Japan
 - Global Leader of Premium High-Index Optical Monomers (MR-Series™: MR-8™, MR-7™, MR-10™, MR-174™)
 - \$16B in Sales, 13K Employees Worldwide
 - SDC operates as an Independent Wholly-Owned Subsidiary of Mitsui
- 2010 SDC Acquired FSI Coating Technologies, Inc., Anti-fog Technology Leader
- 2011 Mitsui Chemicals, Inc. acquired Acomon AG
 - Established in 1980, RAV 7® and RAVolution® Low-Index Optical Monomers in Switzerland
- 2013 Mitsui Chemicals, Inc. acquired KOC Solution Co., Ltd.
 - Established in 1999, KOC® Mid, High, Super-High Index, Photochromic & Impact Resistant Optical Monomers in Korea & China
- 2013 Opening SDC Technologies Asia-Pacific Singapore office
- 2014 SDC Purchases Majority Ownership of Lens Technology I, LLC , Ophthalmic Hard Coatings (renamed LTI Coating Technologies, LLC)

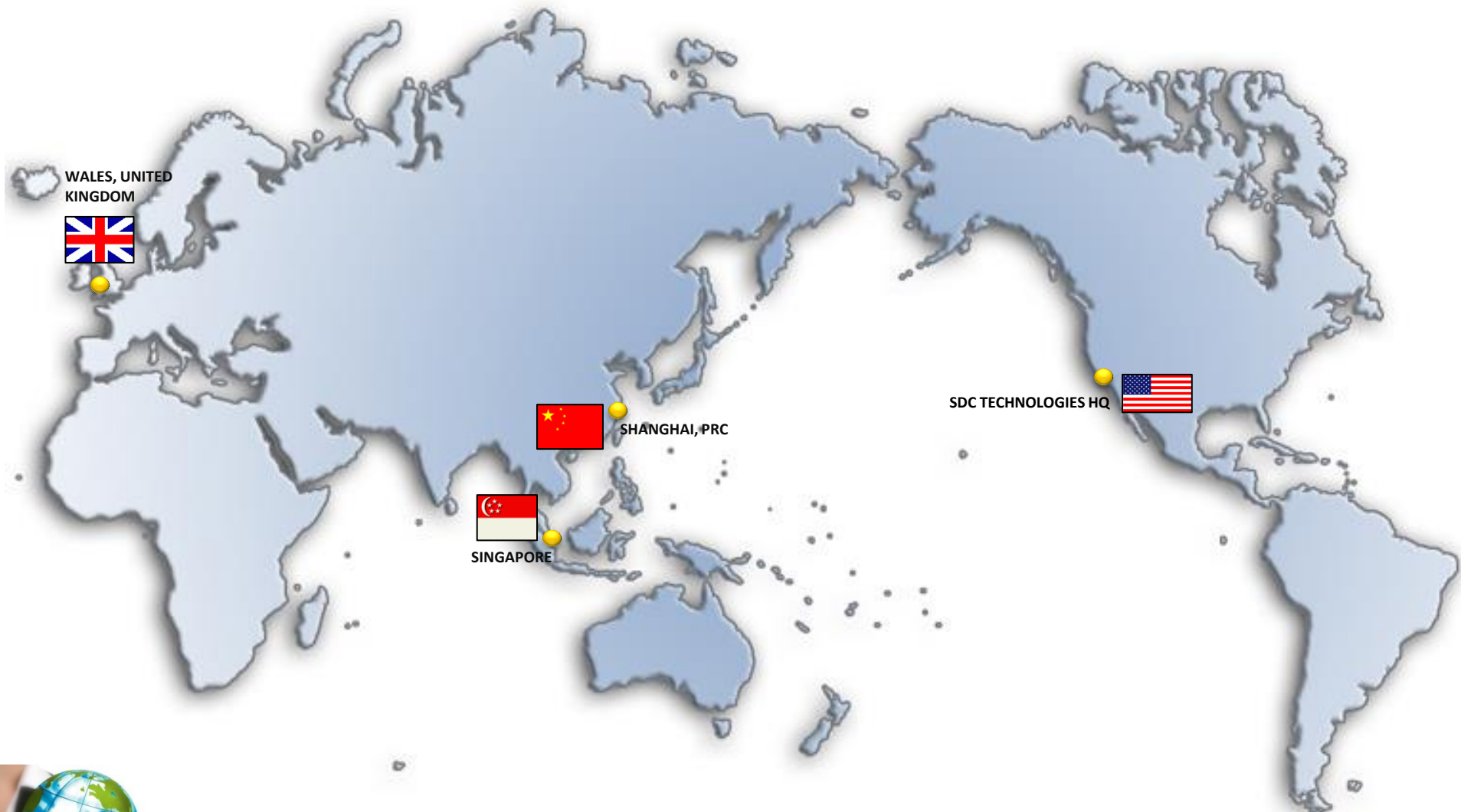


Pioneering Coating Technologies

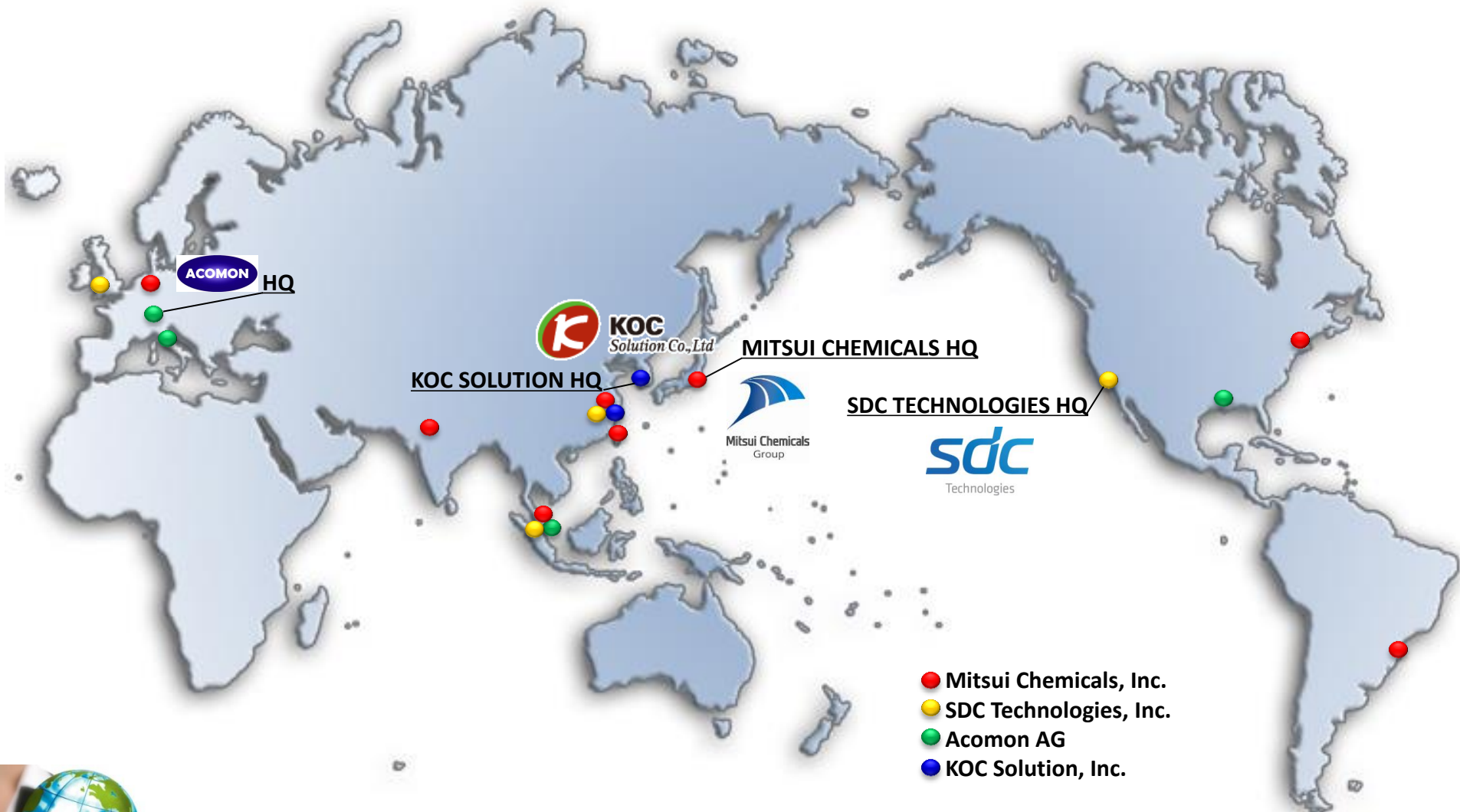
- Recognized Global Leader of Premium Abrasion-Resistant Coatings
 - Expanding the Science of Sol-Gel Chemistry
- Cutting-edge Research and Proprietary, Patented Technologies
- 70+ CrystalCoat™ product portfolio 
- 100+ patents & patents-pending globally
- Engineering Unique Coatings for a Wide Variety of Substrates
- Support Multiple Vertical Markets
- Manufacturing Quality Certification: ISO 9001: 2008
- Worldwide Distribution Network

CrystalCoat™ is a registered trademark of SDC Technologies, Inc

SDC Technologies Footprint



Global Vision Care Group



Vision Care – MCI Group of Companies



Lens Monomer

ACOMON AG

(HQs: Baar, SWITZERLAND)

Brand: **RAV™ Series**



Coating Materials

SDC TECHNOLOGIES, INC.

(HQs: Irvine, CA, USA)

Brand: **CrystalCoat™**



Lens Monomer

KOC SOLUTION CO., LTD.

(HQs: Daejeon, Korea)

Brand: **KOC™ Series**



Mitsui Chemicals

Lens Monomer

MITSUI CHEMICALS, INC.

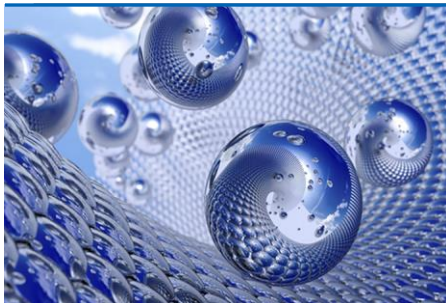
(HQs: Tokyo, JAPAN)

Brand: **MR™ Lens**



Provide innovative materials and total solution to optical lens industry!

NOTE: Sales & Technical service of each company are conducted independently



Advanced Technology Global Distribution & Support

Technology/Product Development

- Elite team of senior chemists dedicated to discovering new technologies
- World-class, cost-effective coatings with long product life

Manufacturing/Distribution

- In-house specialty manufacturing for both large/small quantities
- Streamline supply-chain complexity and accelerate time-to-marketing
- Global, just-in-time (JIT) distribution

Worldwide Technical Support/Customer Care

- Experts in technical application consulting, ensuring high manufacturing yields
- Access to state-of-the-art equipment for lab-scale feasibility studies
- Dedicated, responsive support to ensure superior, consistent results



Continuous Improvement



Quality Policy

- Pursue quality and safety in all endeavors
- Continually improve our processes and products
- ISO 9001:2008 Certified, ISO certified since 2001

Safety Policy

- Facilities built to comply with the strictest environment and safety standards
- Participate in external surveillance, internal ISO certification audits
- Compliant with all packaging and shipping regulations globally



Environmental Sustainability

- Manufacture environmentally friendly and energy efficient coatings (UV cure, water-based, low VOC, Solvent-Free)
- Advocate bringing safe and innovative products to the market place



Powerful Symbiotic Partnership



Mission

- To be a “Trusted Advisor” to our customers with demonstrated expertise in product development, coating application and high yields.

Program Features

- Catalyst for generating ideas, exploring concepts and creating value through innovation.
- Deliver high performance coatings globally, aligned with your requirements.

Customer Benefits

- Complement your internal R&D resources without additional costs.
- Localized product application expertise, ensuring maximized yields.
- Accelerate your time-to-market.

Collective collaboration to achieve the best results.



Core Business Initiatives



Our Vision

- To create value through customer partnerships
- Deliver uncompromising service
- Promote diversity and environmental responsibility



Our Mission

- To provide premium functional coating technologies
- Focus on improving product performance and durability
- Continual development of a new generation of coatings



Our Values

- Devoted to the highest ethical conduct standards for performance and accountability
- Commitment to customer relationships grounded on trust and integrity



Honesty, Respect & Confidentiality

Business Conduct

- Support passionate, creative and enterprising thinking
- Inspire integrity, empower responsibility
- Engage and embrace diversity and respect
- Lead by example, continually seeking improvement
- Continual innovation and pursuit of quality and excellence

Business Relations

- Confidentiality, non-disclosure, and respect for intellectual property
- Ethical acquisition and use of business intelligence
- Fair competition and trade practices
- Environmental conservation, health and safety protection



Competitive Advantage

Global Consistency

- Global Consistency
- Worldwide presences
- Support of brand extensions

Leading-Edge Technology

- Continuous product innovation
- Differentiated product performance

Efficient Value Chain

- Fewer suppliers
- Cost-effective solutions
- Flexible, adaptive supply base
- Application Expertise



THE RECOGNIZED GLOBAL LEADER



Markets

Commercial & Industrial

A photograph of laboratory glassware, including several test tubes and a pipette, arranged on a surface. The image is partially obscured by a blue curved banner.

32 YEARS OF PRODUCT INNOVATION

Vertical Markets Served



Complementary Hard Coats, Film, Sheet & Primers

- Anti-Fog Coating & Film Applications
- Automotive, Aerospace & Transit
- Commercial Freezer Display Cases
- Custom Vertical Market Applications
- Electronics
- Medical & Safety
- Military & Security
- Ophthalmic Solutions
- Sunglasses & Sports Eyewear





Accelerating Durability and Optical Clarity



Features

- Exceptional optical clarity
- Excellent resistance to abrasion, scratch, chemical, impact & UV radiation
- Premium weatherability & outdoor durability
- Versatile, primer-free adhesion to acrylic and PC
- Compatible with A/R, mirror & metalizing treatments
- Highly stable, maximizing product yields

Applications

- Automotive & Transit: windows, side mirrors and camera systems, windshields/screens, canopies, lights, sun/moon roofs, cockpit instrument clusters, panel displays & gauges, and aluminum wheel covers
- Electronics: Head-up displays, GPS navigation devices and systems, LED lighting





Elevating Aircraft Equipment Durability & Performance

Features

- Exceptional optical clarity
- Excellent resistance to abrasion, scratch, chemical, impact & UV radiation
- Premium weatherability & outdoor durability
- Compatible with A/R, mirror & metalizing treatments
- Highly stable, maximizing product yields

Applications

- Aviation: windows, windshields, canopies, lighting, cockpit instrument clusters, panel displays & gauges
- Electronics: Head-up displays, GPS navigation devices and systems, LED lighting
- Eyewear protection: goggles, face shields, visors and space helmets





Anti-Fog Film for Cooler, Deli & Freezer Display Case Doors

Features

- Superior water washable anti-fog, abrasion, scratch, mar & UV resistance
- Highly effective and long lasting condensation control
- Durable even under humid and wet conditions
- Printable surface, can be digitally printed upon for advertising



Benefits

- Easy to install and maintain with common household cleaners
- Optically clear, improving visual merchandising
- Supports environmental leadership and sustainability initiatives
 - Optimizes efficiency, reducing energy consumption of freezer/compressor operations





Maximizing Durability & Performance of Digital Products

Benefits

- CrystalCoat™ provides durability to all types of plastic, plastic films, metal (aluminum, stainless steel) and metalized parts

Features

- Premium anti-fog, abrasion, scratch and chemical resistance
- Water-washable hard coatings and films
- Highly durable, weatherable and UV-protection
- UV - cure coating options available
- Compatible with A/R, mirror and metalizing treatments

Applications

- Superior coating solution for multiple electronic devices such as:
 - Cameras, GPS Systems, and plastic watch crystals
 - Desktop, laptop, tablet, notebook, and mobile computers
 - Digital outdoor billboard signage and kiosks
 - eReaders, digital notebook readers such as Kindle
 - HUD, Flat Panel Display (FPD), LED, LCD (plasma screens) OLED Portable multi-purpose Internet communications/media and PDA devices (ie. iPad, iPod)
 - Mobile and smartphone windows and casings
 - TV monitors, touch panel screens





Optimizing Visual Clarity And Product Durability

Benefits

- CrystalCoat™ provides durability to all types of plastic, plastic films, glass, metal and metalized parts

Features

- Superior optical quality
- Premium anti-fog, abrasion, chemical impact and scratch resistance
- Water-washable hard coatings and films
- Weatherable and UV-protection
- Tintable permeable, fasting tinting and color-fast
- Cures at low temperatures, resistant to ink ghosting

Applications

- Medical electronic displays and devices, surgical and diagnostic camera equipment, microscopes
Aircraft canopies, cabin windows, cockpits & instrument clusters
- Protective & Safety eyewear: visors, face shields, visors, masks and goggles





Applications Where Visual Clarity is Imperative

Benefits

- CrystalCoat™ provides durability to all types of plastic, plastic films, glass, metal and metalized parts

Features

- Superior optical quality
- Premium anti-fog, abrasion, chemical impact and scratch resistance
- Water-washable hard coatings and films
- Weatherable and UV-protection
- Tintable permeable, fast tinting and color-fast
- Cures at low temperatures, resistant to ink ghosting

Applications

- Provides superior protection to bullet/shatterproof glass (cars)
- Optical equipment: binoculars, rifle, night and laser scopes & surveillance cameras
- Aircraft canopies, cabin windows, cockpits & instrument clusters
- Military tank and security vehicle windows, windshields, instrument gauges and guidance systems
- Protective & Safety eyewear: visors, face shields, visors, masks and goggles



THE RECOGNIZED GLOBAL LEADER



Vision Eyewear

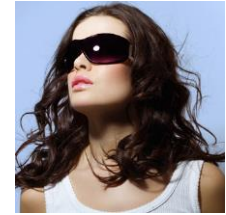
Our specialty, providing coating solutions for the world's most prestigious brands.

Vision Eyewear Vertical Market



Eyewear Markets

- Prescription
- Safety and Military
- Sports
- Sunglass



Customers

- Leading Prescription Lens Manufacturers
 - **Americas**
 - **Asia**
 - **Europe**
- Leading Sunglass Manufacturers Globally
- Premium Sunglass Brands
- Premium Sports Brands
- Leading Safety and Military Organizations



Many customers use SDC products exclusively.



Multiple Industry Leading Eyewear Solutions

Benefits

- CrystalCoat™ provides durability to all types of plastic, plastic films, glass, metal and metalized parts

Features

- Superior Optical Clarity
- Premium anti-fog, abrasion, chemical impact and scratch resistance
- Water-washable hard coatings and films
- Weatherable and UV-protection
- Index-Matched (Mid and High)
- Tintable and Non-Tintable
- Primer and Primerless

Eyewear Lens Applications

- High-Index lenses such as MR™ Series (MR-8, MR-7, MR-10, MR-174)
- CR-39® & RAV 7®, RAVolution®, and Trivex®
- Acrylic, polycarbonate, polyamide and other plastics
- Polarized, photochromic and tinted
- Compatibility with AR, tinted and metalized treatments

CrystalCoat™ is a trademark of SDC Technologies, Inc.
MR-8™, MR-7™, MR-10™ and MR-174™ are trademarks of Mitsui Chemicals, Inc.
RAV 7® and RAVolution® are registered trademarks of Acomon AG.
Acomon AG is a wholly-owned subsidiary of Mitsui Chemicals, Inc.
CR-39® and Trivex® are registered trademarks of PPG.

THE RECOGNIZED GLOBAL LEADER



CrystalCoat[™] Products

Index-Matched, Multi-Purpose, Primerless, Tintable & Weatherable

A photograph of several glass beakers and test tubes on a laboratory bench. A pipette is shown dispensing a drop of liquid into one of the beakers. The scene is lit with a cool, blue light, creating a professional and scientific atmosphere.

32 YEARS OF PRODUCT INNOVATION

Abrasion Resistant Coatings

Premium High Performance

Enhancing the World's Most Prestigious Brands



Coating Solutions



Substrate Applications



Custom Development

THE RECOGNIZED GLOBAL LEADER

Why are SDC Coatings Unique?



Pioneers of Innovation

SDC was the first to use nano-particles to develop Sol-Gel coatings

- Provides a hard, glass-like surface

Outperforms convention coatings and paints

- Exceptional optical quality
- Superior abrasion resistance
- Highly durable and chemical resistance

Why Customers choose SDC

- Product quality and performance superior
- Delivery of customized product solutions
- Application expertise and customer support
- Ongoing technology development and product improvements



Easy Integration with Operations

- Enhanced product performance, utility, appearance and exception quality
- Environmentally friendly UV-cure, water-based and low VOC options available
- Easy to use and highly stable products
- Products can easily be integrated into coating operations, requiring no pre-mixing
- Long product service life is cost-effective, reducing the need for frequent tank change-outs
- Availability globally, multi-substrate compatible coating solutions streamline manufacturing, dramatically improving yields and profitability
- Access to SDC's global technical support team for all product validation and application requirements



Innovative Product Solutions



- Superior optical clarity
- Premium abrasion, chemical, impact, and scratch resistance
 - **Best-in-class Bayer results**
- Good adhesion to a variety of substrates
- Compatibility with AR, mirror and metalizing lens treatments
- Excellent environmental durability including QUV
- Meets European and American safety standards (ANSI Z87.1-2003, EN 166K, EN166N, EN166UV)
- Formable, flexible and tintable
- Excellent anti-fog, hydrophobic, hydrophilic and water sheeting properties
- High-index matched as well as medium hard coating options
- Primer and primerless, thermal and UV-cure



Multiple Applications

- Superior optical clarity
- Acrylic
- Aluminum and other non-ferrous metals
- CR-39[®] & RAV 7[®]
- Glass
- High-Index lenses, MR[™]Series MR-8[™], MR-7[™], MR-10[™] & R-174[™]
- PET Film & Sheet
- Polyamide (Optical Nylon)
- Polycarbonate and other Plastics
- RAVolution[®] and Trivex[®]
- Specialty Polymers
- Stainless Steel



Multiple Coating Applications



- Cast Resins
- Fabricated Plastics, Metal & Glass
- Plastic Film
- Forged & Non-Ferrous Metals
- Injection Molded Plastics
- Plastic, Metal & Glass Sheet



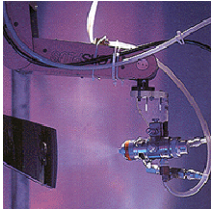


Dip

- Two-sided coating provides high throughput and the ability to maintain thickness control
- Ideal for lenses and small parts

Flow

- Effective for large or uniquely shaped parts
- Well suited for plastic sheeting and large shapes



Roll-to-Roll

- One-sided coating, ideal for UV-cure coatings
- Ideal, continuous process for films and sheets

Spin

- One-sided coating features good thickness control
- Perfect for lenses



Spray

- One-sided coating ideal for large or complex parts, offers high throughput
- Applications include cell phone windows and casings



Thermal/UV-Cure Coatings and Primers

Our Most Popular CrystalCoat™ Products

- Index-Matched Coatings
 - CP-161, IM-9060, C-410, IM-9016
- Multi-Purpose Coatings
 - MP-100, MP-101, MP-1154D, MP-1179, MP-2020B
- Primerless Coatings for PC
 - PF-2500, PF-4200
- Tintable Coatings
 - TC-332, TC-339, TC-3000
- UV-Cure Coatings
 - MP-1175UV, MP-1211UV
- Weatherable Coating System
 - CC-6000, PR-660

CrystalCoat™



CrystalCoat™ is a trademark of SDC Technologies, Inc.

Index-Matched Product Suite



High-Index Eyewear Enhanced by High-Performance Chemistry



Features

- CrystalCoat™ is the best high-index coating on the market, considered the world's leader
- Optically clear, provides exceptional adhesion to multiple substrates
- Capable of performing in the most demanding environments
- Excellent abrasion, chemical, and impact resistance, delivering best-in-class Bayer results
- Easy to use, does not require pre-mixing, available in spin or dip, primer or primer-free options
- Long service life, can be easily integrated into your coating operations

Substrate Materials

- Acrylic
- High-Index lenses MR™ Series MR-8™, MR-7™, MR-10™ & R-174™
- Polyamide (Optical Nylon)
- Polycarbonate and other Plastics
- RAVolution® and Trivex®


MR-8™, MR-7™, MR-10™, MR-174™ are trademarks of Mitsui Chemicals, Inc. RAV 7® and RAVolution® are registered trademarks of Acomon AG. Acomon AG is a wholly-owned subsidiary of Mitsui Chemicals. CR-39® and Trivex® are registered trademarks of PPG.

©2018 SDC Technologies, Inc. Confidential
SDC Technologies, Inc. is a wholly-owned subsidiary of Mitsui Chemicals, Inc.





Exceptional Adhesion

Product	Description	Coating Method	Substrate	Cure	Features	Application
CrystalCoat™ C-410 	Polysiloxane-based coating designed for applications on etched cast resins. Provides excellent abrasion and chemical resistance and has a refractive-index of 1.62. REACH Ready/Compliant.	Dip, Spin	Primer for use in conjunction with SDC Index Matched Coatings. Adhesion promoter for High-Index Substrates such as MR™ Series MR-8™.	Thermal	Optical Clarity, Premium Abrasion Resistance, Chemical Resistance, Refractive Index of 1.62. Compatible with A/R, Mirror and Metallizing Lens Treatments.	Ophthalmic Prescription Rx Lens
CrystalCoat C-415	Polysiloxane-based coating designed for applications on etched cast resins. Provides excellent abrasion resistance and has a refractive-index of 1.60. REACH Ready/Compliant. Primer required on Polycarbonate.	Dip, Spray	Adhesion to High-Index Substrates such as MR™ Series MR-8™, MR-7™ and MR-10™ .	Thermal	Optical Clarity, Premium Abrasion Resistance, Refractive Index of 1.60. Compatible with A/R, Mirror and Metallizing Lens Treatments.	Ophthalmic Prescription Rx Lens
CrystalCoat CC-1602	Polysiloxane-based coating, designed for applications on etched cast resins. Provides excellent abrasion resistance and has a refractive index of 1.6. REACH Ready/Compliant.	Dip, Spin	Adhesion to High-Index Substrates such as MR™ Series MR-8™, MR-7™ and MR-10™ .	Thermal	Optical Clarity, Premium Abrasion Resistance, Chemical Resistance, Refractive Index of 1.60. Compatible with A/R, Mirror and Metallizing Lens Treatments.	Ophthalmic Prescription Rx Lens

Exceptional Adhesion



Product	Description	Coating Method	Substrate	Cure	Features	Application
CrystalCoat IM-9016	Polysiloxane-based coating, designed for applications on etched cast resins. Provides excellent abrasion and chemical resistance and has a refractive index of 1.66-1.67. REACH Ready/Compliant.	Dip	Adhesion to High-Index Substrates such as MR™ Series MR-8™ MR-7™ and MR-10™ .	Thermal	Optical Clarity, Premium Abrasion Resistance, Chemical Resistance, Refractive Index of 1.60. Compatible with A/R, Mirror and Metallizing Lens Treatments.	Ophthalmic Prescription Rx Lens
CrystalCoat IM-9060	Polysiloxane-based coating designed for applications on etched cast resins. Provides excellent abrasion resistance and has a refractive-index of 1.60. REACH Ready/Compliant. Primer required on Polycarbonate.	Dip, Spin	Adhesion to High-Index Substrates such as MR™ Series MR-7™ , MR-10™	Thermal	Optical Clarity, Premium Abrasion Resistance, Chemical Resistance, Refractive Index of 1.60. Compatible with A/R, Mirror and Metallizing Lens Treatments.	Ophthalmic Prescription Rx Lens

Exceptional Adhesion



Product	Description	Coating Method	Substrate	Cure	Features	Application
CrystalCoat™ CP-161 <i>CrystalCoat™</i>	Solvent-based primer designed to impart impact resistance to coated high refractive-index (R.I.) cast resin substrates. Provides excellent adhesion of hard coatings to thin cast resin lenses and refractive index-match to R.I. 1.6 cast resins.	Dip	Primer for use in conjunction with SDC Index Matched Coatings. Adhesion promoter for High-Index Substrates such as MR™ Series MR-8™.	Thermal	Optical Clarity, Impact Resistance, Excellent Adhesion Promoter for Cast Resin Lenses, R.I. Match to 1.6 Cast Resin Lenses. REACH Ready/Compliant.	Ophthalmic Prescription Rx Lens
CrystalCoat CP-162	Solvent-based primer designed to impart impact resistance to coated high refractive-index (R.I.) cast resin substrates. Provides excellent adhesion of hard coatings to thin cast resin lenses and refractive index-match to R.I. 1.6 cast resins.	Dip, Spin	Adhesion to High-Index Substrates such as MR™ Series MR-8™, MR-7™, MR-10™ & MR-174™	Thermal	Optical Clarity, Premium Impact Resistance, Refractive Index of 1.60. REACH Ready/Compliant.	Ophthalmic Prescription Rx Lens
CrystalCoat CP-163	Solvent-based primer designed to impart impact resistance to coated high refractive-index (R.I.) cast resin & Polycarbonate substrates. Provides excellent adhesion of hard coatings to thin cast resin lenses and refractive index-match to R.I. 1.6 cast resins.	Dip, Spin	Adhesion to High-Index Substrates such as MR™ Series MR-8™, MR-7™, MR-10™ & MR-174™	Thermal	Optical Clarity, Premium Impact Resistance, Refractive Index of 1.60. REACH Ready/Compliant.	Ophthalmic Prescription Rx Lens
CrystalCoat CP-165	Solvent-based primer designed to impart impact resistance to coated high refractive-index (R.I.) cast resin substrates. Provides excellent adhesion of hard coatings to thin cast resin lenses and refractive index-match to R.I. 1.67 cast resins.	Dip, Spin	Adhesion to High-Index Substrates such as MR™ Series MR-7™, & MR-174™	Thermal	Optical Clarity, Premium Impact Resistance, RI 1.67. REACH Ready/Compliant.	Ophthalmic Prescription Rx Lens



Exceptional Abrasion Resistance Accelerated Performance

Features

- Multi-purpose products provides exceptional adhesion to multiple substrates with exceptional tintability
- Weatherable durability capable of performing in the most demanding environments
- Excellent abrasion, chemical, and impact resistance, delivering premium Bayer results
- Available in dip, flow or spin, primer or primer-free, thermal and UV-cure options
- Long service life, can be easily integrated into your coating operations, does not require pre-mixing

Applications

- Ideally suited for ophthalmic, sunglass, sports, military and safety eyewear where optical clarity and high durability are required
- Also suitable for aerospace, automotive and transit glazing as well as electronic devices

Substrate Materials

- Acrylic
- CR-39® and RAV 7®
- High-Index lenses MR™Series MR-8™, MR-7™, MR-10™ & R-174™
- Polyamide (Optical Nylon)
- Polycarbonate and other Plastics
- RAVolution® and Trivex®

SDC Multi-Purpose Product Suite (1 of 2)



Accelerated Performance

Product	Description	Coating Method	Substrate	Cure	Features	Application
CrystalCoat™ MP-100	Polysiloxane-based coating ideally suited for acrylic. Can be used on a variety of substrates when used with an SDC primer.	Flow	Primer-Free Adhesion to Acrylic (PMMA). Other substrates with SDC Primer	Thermal	Optical Clarity, Abrasion and Chemical Resistance, Outdoor Durability	Aerospace, Architecture,, Automotive and Transit Glazing, Electronics and Eyewear
CrystalCoat MP-101	Polysiloxane-based coating ideally suited for acrylic. Can be used on a variety of substrates when used with an SDC primer.	Dip	Primer-Free Adhesion to PMMA. Other substrates with SDC Primer	Thermal	Optical Clarity, Abrasion and Chemical Resistance Outdoor Durability	Aerospace, Architecture, Automotive and Transit Glazing, Electronics and Eyewear
CrystalCoat MP-1154D	Polysiloxane-based coating, excellent refractive index match with hard resin lenses. Can be used on a variety of substrates. Ideally suited for ophthalmic applications. SDC Primer required for use on Polycarbonate (PC).	Dip, Spin	PMMA, PC, Polyamide (PA), CR-39®, RAV 7®, Trivex®, RAVolution® and High-Index Substrates such as MR™ Series MR-8™, MR-7™, MR-10™, MR-174™	Thermal	Optical Clarity, Excellent Abrasion and Chemical Resistance. Compatibility with A/R, Mirror and Metalizing Lens Treatments. Excellent Environmental Durability including QUV.	Ophthalmic, Sunglass, Military and Sports Eyewear



Exceptional Abrasion Resistance

Product	Description	Coating Method	Substrate	Cure	Features	Application
CrystalCoat MP-2020B	Polysiloxane-based abrasion and chemical resistant coating, works especially well under low cure temperatures and times. Delivers premium Bayer results ranging from 7+.	Dip, Spin	PMMA, PC, PA, CR-39, RAV 7, Trivex, RAVolution, and High-Index Substrates such as MR Series MR-8 , MR-7 , MR-10 , MR-174	Thermal	Optical Clarity, Premium Abrasion, Chemical Resistance. Compatibility with A/R, Mirror and Metalizing Lens Treatments. Excellent Environmental Durability including QUV.	Ophthalmic, Sunglass, Sports and Military Eyewear



Premium Abrasion and Chemical Resistance

Features

- Primerless (or primer-free) adhesion to polycarbonate
- Premium abrasion and chemical resistance
- Flexibility, compatible with AR, mirror and metalizing treatments
- Thermal cure, available in dip or spin application

Applications

- Ideally suited for ophthalmic, sunglass, sports, military, and safety eyewear where optical clarity and high durability are required
- Also suitable for aerospace, automotive and transit glazing as well as electronic displays



Ideally Suited for High Performance Polycarbonate Applications

Product	Description	Coating Method	Substrate	Cure	Features	Application
CrystalCoat PF-4200	Polysiloxane-based coating provides excellent abrasion and chemical resistance. Ideally suited for high performance applications where optical clarity and high durability are required.	Dip, Spin	Primer-Free Adhesion to PC	Thermal	Optical Clarity, Abrasion and Chemical Resistance. Flexibility, Compatible with A/R, Mirror and Lens Metalizing Treatments.	Aerospace, Architecture, Automotive and Transit Glazing; Electronics Displays; Eyewear: Ophthalmic, Sunglass, Military and Sports

Tintable Coatings Product Suite



Fast Tint Technology Extraordinary Performance



Features

- Tintable coat products provide adhesion to multiple substrates with exceptional accelerated tintability
- Weatherable UV durability capable of performing in the most demanding environments
- Premium abrasion and chemical resistance
- Available for dip or spin applications
- Compatible with AR, mirror, and metalizing treatments
- Long service life, can be easily integrated into your coating operations, does not require pre-mixing

Applications

- Ideally suited for ophthalmic, sunglass, sports, military, and safety eyewear where optical clarity and high durability are required

Substrate Materials

- Acrylic
- CR-39® and RAV 7®
- High-Index lenses MR™ Series MR-8™, MR-7™, MR-10™ & R-174™
- Polyamide (Optical Nylon)
- Polycarbonate and other Plastics
- RAVolution® and Trivex®

SDC Tintable Coating Product Suite



Fast Tint Technology

Product	Description	Coating Method	Substrate	Cure	Features	Application
CrystalCoat™ TC 332	Polysiloxane-based tintable abrasion resistant coating, can be used on a variety of substrates.	Dip, Spin	PC, Polyamide (PA), Acrylic, CR-39®, RAV 7®, RAVolution®, Trivex®, High-Index Substrates such as MR™ Series MR-8™, MR-7™, MR-10™ & MR-174™	Thermal	Rapid Tinting, Optical Clarity, Abrasion and Chemical Resistance. Compatibility with A/R, Mirror and Metalizing Lens Treatments.	Ophthalmic, Sunglass, Military and Sports Eyewear
CrystalCoat TC-339	Polysiloxane-based tintable abrasion resistant coating can be used on a variety of substrates.	Dip, Spin	PC, PA, CR-39, RAV 7, Trivex, RAVolution, High-Index Substrates such as MR Series MR-8, MR-7, MR-10 & MR-174	Thermal	Tintability, Optical Clarity, Abrasion Resistance. Compatibility with A/R, Mirror and Metalizing Lens Treatments.	Ophthalmic, Sunglass, Military and Sports Eyewear
CrystalCoat TC-3000	Polysiloxane-based tintable abrasion resistant coating, combines fast tintability with excellent abrasion and chemical resistance. Can be used on a variety of substrates.	Dip, Spin	PC, PA, Acrylic, CR-39, RAV 7, Trivex, RAVolution, High- Index Substrates such as MR Series MR-8, MR-7, MR-10 & MR-174	Thermal	Rapid Tinting, Premium Abrasion and Chemical Resistance. Optical Clarity, Compatibility with A/R, Mirror and Metalizing Lens Treatments.	Ophthalmic, Sunglass, Military and Sports Eyewear

Weatherable Coating System



Exceptional UV Protection & Outdoor Durability



- Electronic Displays: Tablets, Phones, Computers, TVs
- Lighting & Mirrors for Multiple Applications
- Transit: Commercial, Industrial and Recreational Vehicles such as Automotive, Aerospace, Bus, Industrial & Commercial, Marine, Motorcycle, Rail





High-Performance Solutions for Transit & Electronics

Transit Applications

- Airplane, bus, car and rail windows and mirrors
- Automotive sunroofs, aerospace cockpit canopies
- Motorcycle and automotive windscreens
- Instrument panels, displays, and gauges
- LED lighting for commercial, industrial and recreational vehicles



Electronic Device Applications

- PDAs, digital readers
- Desktop, laptop, tablet and mobile computers
- Portable multi-purpose Internet communications/media devices (i.e. iPad, iPod)
- Mobile and Smartphone windows and casings
- LCD and plasma screens
- Cameras and plastic watch crystals

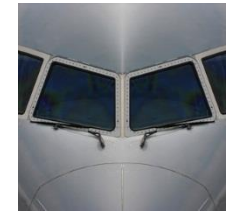
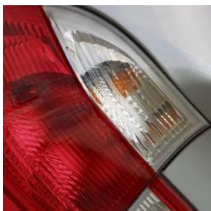




Accelerates Outdoor Durability

Coating Features & Benefits

- Superior optical clarity, exceptional adhesion to PC
- Excellent abrasion and scratch resistance
- Weatherable, outdoor durability and UV-protection



Available Options

- Thermal Cure
- Two-Part Coating & Primer System
- Flow Coat Compatible

Weatherable Coating System



Delivers Superior UV Protection & Outdoor Durability

Product	Description	Coating Method	Substrate	Cure	Features	Application
CrystalCoat™ CC-6000	CrystalCoat two-part weatherable coating system with one bake application. Offers good initial and boiling water adhesion. Passes water soak testing. Designed to provide excellent adhesion to PC when used with complementary SDC's CrystalCoat PR-660 primer. Does not craze or crack when exposed to accelerated Florida and Arizona test weather conditions.	Flow	Polycarbonate (PC) when used with PR-660	Thermal	Optical Clarity, Excellent Abrasion, Scratch and UV Resistance, Weatherability and Outdoor Durability	Automotive & Transit, Electronic Displays
CrystalCoat PR-660	CrystalCoat Primer designed to impart weatherability and UV protection on coated parts in combination with CC-6000 hard coat.	Flow	Polycarbonate	Thermal	Optical Clarity, Excellent Abrasion, Scratch and UV Resistance, Weatherability and Outdoor Durability	Automotive & Transit, Electronic Displays



Environmentally Friendly Abrasion & Chemical Resistance

Markets Served

- Aerospace & Architectural
- Automotive & Transit
- Ophthalmic, Medical, Safety & Sports Eyewear



Features

- Exceptional Abrasion & Chemical Resistance
- Outstanding Optical Clarity



Available Options

- Environmentally Conscious UV Light, Fast Curing
- Dip, Flow & Spray Coat Compatible

UV-Cure Coatings - 1 of 2



Supports Environmental Sustainability Initiatives

Product	Description	Coating Method	Substrate	Cure	Features	Application
CrystalCoat™ MP-1142UV	Multi-purpose, UV light curing abrasion and chemical resistant coating. Primer-free adhesion to PMMA & PC, Resistance to Flame. REACH ready/compliant.	Dip, Spin	Primer-Free Adhesion to Acrylic (PMMA) & Polycarbonate (PC)	UV	Optical Clarity, Abrasion and Chemical Resistance. Compatible with Anti-Reflective (A/R), and Mirror/Metalizing Lens Treatments	Ophthalmic, Military, Safety (PPE), Sports & Sunglass Eyewear
CrystalCoat™ MP-1175UV	Multi-purpose, UV light curing abrasion and chemical resistant coating adheres to PMMA, PC and primered/pre-treated PET film. Fast cure, non-tintable coating. Primer-free adhesion to polycarbonate and acrylic. REACH ready/compliant.	Flow; Slit-die; Gravure	Primer-Free Adhesion to Acrylic (PMMA) & Polycarbonate (PC)	UV	Optical Clarity, Abrasion and Chemical Resistance. Compatible with Anti-Reflective (A/R), and Mirror/Metalizing Lens Treatments	Aerospace, Architecture, Automotive and Transit. Sunglass, Military and Sports Eyewear
CrystalCoat MP-1211UV	Multi-purpose, Ultraviolet (UV) light curing abrasion and chemical resistant coating. Fast cure, non-tintable coating. Primer-free adhesion to polycarbonate and acrylic. REACH ready/compliant.	Spray	Polycarbonate (PC) and Acrylic (PMMA)	UV	Exceptional optical clarity and stability. Excellent abrasion and chemical resistance. Compatible with Anti-Reflective (A/R), and Mirror/Metalizing Lens Treatments	Aerospace, Architecture, Automotive and Transit, Medical and Safety Eyewear

UV-Cure Coatings – 2 of 2



Supports Environmental Sustainability Initiatives

Product	Description	Coating Method	Substrate	Cure	Features	Application
CrystalCoat™ MP-1230UV	Multi-purpose, Ultraviolet (UV) light curing coating. REACH ready, flexible coating, compatible with anti-reflective and metalizing treatments. Designed for dip or roll to roll coat applications.	Dip, Roll to Roll	Primer-free adhesion to PET, PMMA & PC	UV	Optical Clarity, Abrasion and Chemical Resistance. Compatible with Anti-Reflective (A/R), and Mirror/Metalizing Lens Treatments	Aerospace, Architecture, Automotive & Transit, Medical & Safety Eyewear

THE RECOGNIZED GLOBAL LEADER



Technical Service & Support

A photograph of several glass beakers and test tubes arranged on a surface. A pipette is positioned over one of the beakers, with a single drop of liquid about to fall into it. The scene is lit with a cool, blue light, creating a professional and scientific atmosphere.

32 YEARS OF PRODUCT INNOVATION



Strategic Development Partner

Technical Support

- Your strategic development partner focused on continuous quality improvement
- Localized technical support teams backed by central R&D department accelerates product development
- Extensive product portfolio and complementary technology available through parent Mitsui Chemicals and affiliate companies allows to deliver a complete solution while taking advantage of a larger cost-effective supply network.

Customer Care

- Dedicated to world-class operations and global customer relationships
- Committed to delivering uncompromising service, exceeding customer expectations

THE RECOGNIZED GLOBAL LEADER



Summary

Strategic Product Development

A photograph of several glass beakers and test tubes in a laboratory setting, with a pipette tip dispensing a drop of liquid into one of the beakers. The image is partially obscured by a blue curved banner.

32 YEARS OF PRODUCT INNOVATION



Why Choose SDC?

- Long and successful record of continuous growth through technical innovation
- Comprehensive portfolio with hundreds of patented premium coatings for multiple applications
- Trusted Advisor Program
 - Partnership founded on creating business value through quality and technical innovation
 - Serves as an extension of your product development team to ensure quality performance and yields
- SDC's innovative solutions improve the durability and performance of the world's most recognized products
- Extensive support and distribution network



Enhancing Product Durability



- Trusted by the World's Most Prestigious Brands
- From the 2012 Olympic Games swim goggles, to NASA Space Mission helmets, our premium coatings are used to enhance products where high performance is critical.
 - Best-in-class abrasion, chemical, fog, impact and scratch resistance
 - Exceptional optical clarity and environmental durability
- Global Manufacturing Capacity
 - Closely aligned to our global customers to deliver product, service, and support 24x7
 - ISO 9001: 2008 quality certified





What we can do together is
boundless

Product Development Support

- Enhance your products' performance and brand image
- Leverage SDC's proprietary, patented technology
- Rely on consistent, certified products
- Access global JIT delivery and support

Support Partnership for your Products

- Evaluation
- Qualification
- Implementation
- Commercialization
- Future development strategies





SDC

Technologies

sdctech.com

32 YEARS OF PRODUCT INNOVATION